

Provided by Xpert Survey Equipment
[Click Sokkia SET2X for Product Info and Updated Pricing](#)

SETX

SOKKIA CLASSIC



SOKKIA



A New Epic to a Legacy of Breakthrough Technology

Far from home, in the most demanding worksites, you need to rely on toughness and accuracy to pull you through. In the middle of the desert, deep in the heart of the jungle, or on a windswept mountain top, new discoveries are made and new trails are blazed. This is what surveying is all about.

Nobody knows this like SOKKIA, which is why we made the SOKKIA CLASSIC SET X total station, a rugged partner in a journey into undiscovered territory.





N RED-tech EX — High-precision Reflectorless EDM

RED-tech EX EDM provides pinpoint accuracy using an ultra-narrow red laser beam. It performs fast and stable reflectorless measurements up to 500m (1,640ft.) from the industry's shortest 30cm (1ft.) distance. Advanced digital signal processing technology offers greater reliability even under harsh environmental conditions.

Using prisms, RED-tech EX measures up to 10,000m (32,800ft.), and with convenient reflective sheet targets up to 500m (1,640ft.).



Distance	2m (6.6ft.)	10m (33ft.)	40m (131ft.)	100m (328ft.)	300m (984ft.)	500m (1,640ft.)
Beam spot size (height x width)	5 x 7mm (0.2 x 0.28in.)	7 x 9mm (0.28 x 0.35in.)	14 x 14mm (0.55 x 0.55in.)	29 x 24mm (1.14 x 0.95in.)	76 x 56mm (2.99 x 2.2in.)	123 x 89mm (4.84 x 3.5in.)

Measuring beam spot size (Reflectorless mode)

N Single Optimized Beam

RED-tech EX uses only one visible red laser beam for measuring and pointing, allowing you to visually confirm the exact measurement point.

N Advanced Angle Measurement System



All models are equipped with market-proven absolute encoders. Advanced coding and digital processing technologies provide long-term reliability in any work-site conditions. The 1" and 2" high-precision models incorporate IACS (Independent Angle Calibration System) to further enhance measurement reliability.

N IP65 Environmental Protection

SET X offers the highest in environmental protection for Windows CE total stations. SET X has an IP65 rating, meaning it is able to withstand the harshest conditions in the most demanding jobsites. SET X maintains its IP65 rating even with the external battery connected.

IP

65

3URWHFWLRQDJDQLQVWLQJUHVVRI
VROLGIRUHLJQREMHPWV
+LJKHVWOHYHO
7 levels: 0 to 6.
X: unspecified.

3URWHFWLRQDJDQLQVWLQJUHVVRI
ZDWHU
+LJKHVWOHYHO
9 levels: 0 to 8.
X: unspecified.

7KH,QWHUQDWLRQDO(OHFWURWHFKQLFDO&RPPLVLRQVWDQGUG,(&GHVFULEHVDVWHP
IRUFODVVLNLQJGHJUHVVIRISURWHFWLRQSURYLGHGHEHQFORVXUHVRIHOHFWULFDOHTXSRH
7KH,3&RGHFRQVLVWVRIWKHOHWWHUV,3DQGWZRQXPHUDOV/DJHUQXPEHUUHSUHVHQW
JUHDWHUOHYHOVIRISURWHFWLRQ



User-friendly Design

N Ergonomic Handle

SET X features a redesigned ergonomic handle and new attachment mechanism. The handle facilitates a tight grip for use in severe conditions. The handle can be easily and quickly removed for vertical and near vertical measurements and securely reattached in a flash.



N Bluetooth® Wireless Communications



SET X features Class 1 *Bluetooth* wireless modem for license-free long range data communication of up to 200m (650ft.). Enjoy a wireless connection with your data collector or tablet PC for expanded data collection possibilities and seamless data handling.

Usage approval of *Bluetooth* wireless technology varies according to country. Please consult your local SOKKIA office or representative in advance.

N Guide Light Unit

SET X comes standard with a guide light unit to assist in setting out measurements. The guide light unit consists of two different color LED's emitted from a single aperture. The lateral position of a prism can be easily determined at both long and short ranges. A special flashing pattern is also included to assist users with color weakness.

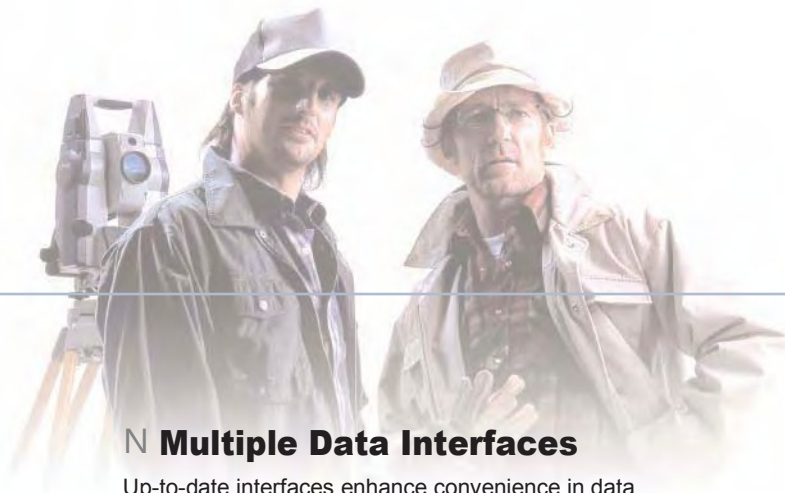


N Color Display/Illuminated Keyboard

SET X has a color LCD touch screen display. The display has high angle visibility and subtle contrast for maximum visibility even in direct sunlight. The full alphanumeric keyboard has concave keys that can be easily pressed by hand or with the stylus and is illuminated to let you see what you are doing under any environmental condition.

An additional control panel on face 2 is available as a factory option.





N Trigger Key

SET X features an ergonomically placed trigger key that greatly facilitates taking measurement while looking through the telescope and even while turning the fine motion screws. Measurement can be taken at any time with just the push of a button.



N Rechargeable Li-ion Battery

SET X offers a flexible power system to support long hours in the field. SET X comes standard with 2 BDC58 rechargeable Li-ion batteries. Each standard accessory battery provides 14 hours of operational time for a total of 28 hours of battery life. The optionally available BDC61 external battery offers an astounding 38.5 hours of operation. The combination of the two provides enough power to work for a week without having to stop and recharge. SET X has no problem measuring long hours on remote jobsites.

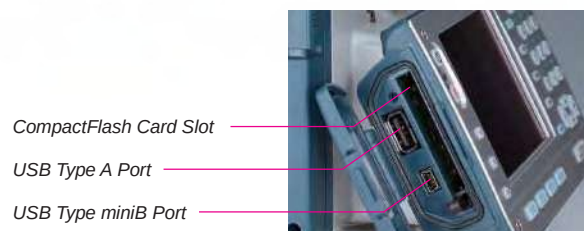


A BDC46B battery can also be used with the provided SB178 adapter.



N Multiple Data Interfaces

Up-to-date interfaces enhance convenience in data storage and transmission.



CompactFlash Card Slot

CF cards (Type II, 3.3V, max. 4GB), SD cards (with CF adapter, max. 1GB) and CF type modems are supported.

USB Port

Up to 4GB USB flash memory (FAT32 format) is supported. A USB card reader can be used to further broaden media usability.

SFX

SFX technology enables data transfer via e-mail to and from anywhere in the world using ~ Internet-capable mobile phone or a CompactFlash modem.



Weatherproof Multi Port

Data transmission and external power connection are available in a single weatherproof port. The port boasts an environmental rating of IP65 with a cable connected.



Standard Accessories

BDC58 rechargeable Li-ion batteries (2 pcs.) L CDC68 charger with EDC113A/113B/113C AC power cable L SB178 battery adapter for BDC46B batteries Stylus (2 pcs.) L CP9 tubular compass L Lens hood L Lens cap L Plumb bob L Tool kit L Wiping cloth L Vinyl cover L Operator's manual L Carrying case L Shoulder strap L Laser caution sign board L Protective film (for LCD screen) and manual

Optional Accessories

For more information, please consult your local sales representative.

SSF Onboard software with a superior

N See everything clearer

Of the many features in the Spectrum Survey Field software, the large graphical user interface (GUI) is one of the best. With the big icons you can point and touch with your finger, instead of using a stylus.



N Survey with speed and convenience

Create, edit, upload, and download faster using advanced data management techniques. Compatibility problems? We know there are several programs that require specific file formats, so we've given SSF numerous file formatting export options.

N Experience the Sokkia edge

SSF data collection software comes with superior data exchange methods, making data management easier.

N Real-Time Field-to-Finish

Make a code, or code and string, edit and see the map update in real-time as we store points.

N Design References

When staking out a road, SSF allows the user to graphically select up to 50 additional surface or segment point references. Each reference is report to the stakeout store point screen, and the current stake report.

N Intuitive User Interface

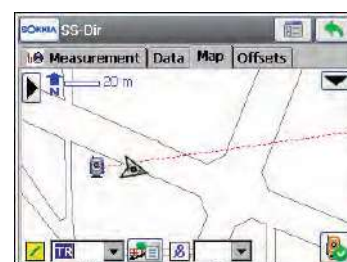
SSF maintains the familiar large icon menu structure for fast and easy touch navigation. Select a function with the touch of a finger, or use the arrow keys to move the blue selection box around the screen.

N MAP-based Topography

SSF provides a superior MAP view in Topo that allows the user to measure and code while showing their current position.

N More Viewable MAP Area

By adding collapsible toolbars for status and zoom icons, the SSF map provides more viewable area.

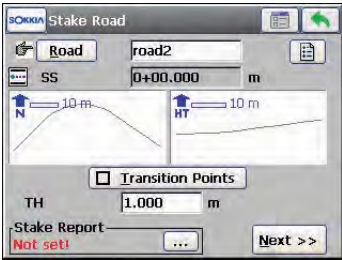


The way is clear: simplify surveying with SSF onboard.

graphical user interface and fast performance.

Stakeout Transition Points

The opening dialog of the Road and Slope stakeout routines offers options for stopping at various Transition Points along the design, for both horizontal and vertical critical stations.



Current Stake Report

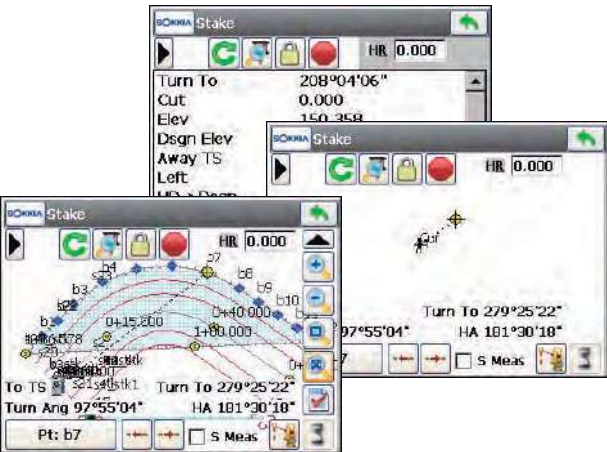
The opening dialog of every stakeout routine now displays the current Stake Report.



User-defined Stakeout Interface

Stakeout supports up to four different views for the graphical information that is displayed.

Additional customization can be done through user-defined data labels. Simply click on the data label to select from the data label options list.



Stake Reports

SSF has industry leading user-defined stake reports. Unlimited configurations and reports can be stored, and up to 5 current reports can be active based on the routines you use.

Sokkia Logo Context Menu

Get access to several features through the Sokkia logo button. This context menu allows the user to quickly Set References in road staking routines, or View Report in every stakeout routine.

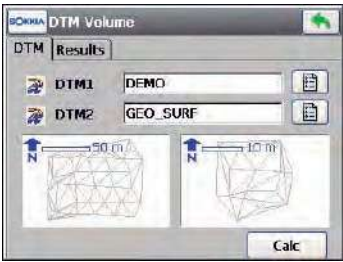
Your Stake Report Format

The stakeout report viewer and store point dialog display the information that you configure in the Stake Report Configuration.

dElev	Cut	Fill	Time
-0.586		0.586	2010:08:17 21:2..
-100.584		100.584	2010:08:17 21:2..
-0.584		0.584	2010:08:17 21:2..
-0.585		0.585	2010:08:17 21:2..
-0.584		0.584	2010:08:17 21:2..
-0.585		0.585	2010:08:17 21:2..
-0.584		0.584	2010:08:17 21:2..
-0.585		0.585	2010:08:17 21:3..
-0.585		0.585	2010:08:17 21:3..
-0.585		0.585	2010:08:17 21:3..

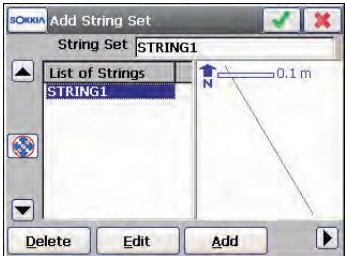
Two Surface Volumes

SSF allows the user to store a measured surface while staking a DTM, and provides the ability to calculate two surface volumes in COGO.



Road Strings

Road Strings and the ability to define String Sets that define the true road design surface sets SSF apart from products limited to cross section road staking.



\$@56=					
+6=6D4@A6		F==JEC27D:E:78	4@21:2=D:89E:782755:DE2746>62DFC:78@AE:4D		
		#678E9>>? &3:64E:G62A6CEFC6>>?>?>? \$287:7:42E:@? 1)6D@=G:78A@H6C			
		I>286C64E :6=5@7G:6HM L> > \$?:>F>7@4FD>7E)6E:4688>2DE65			
		1)6E:4=6:==F>:72E:@73C:89E76DD=6G6=D			
78=6>62DFC6>67E		3D@=FE6674@56CD4277:78@E94:C4=6D25@AE5:2>6EC:42=56E64E:@?			
:7E		68C66@?>= D6=64E23=6			
:DA=2JC6D@=FE:@7DD6=64E23=6		8@? >:=		8@? >:=	
44FC24J1*&		>8 >:= >8 >:=		>8 >:= >8 >:=	
1!*756A67567E78=62=:3C2E:@?7JDE6>		'C@G:565 72			
\$62DFC6>67E>@56		=@4<H:D6@F?E6C4=@4<H:D6D6=64E23=6-167:E9 @C:K@?E2= @C:K@?E2= M*=@A6:? D6=64E23=6			
FE@>2E:45F2=:21:D4@>A67D2E@C		F2=:21:D=:BF:5E:ED67D@C @C<:78C278A >8			
@=:=>2E:@74@>A67D2E:@?		06D% @ D6=64E23=6			
:76>@E:@7D4C6HD		:76@2CD6 DA665>@E:@?			
:DE2746>62DFC6>67E		\$@5F=2E65=2D6C A92D64@>A2C:D@>?>6E9@5H:E9C65=2D6C5:@56			
#2D6C@FEAFE		1)7=64E@C=6DD>@56=2DD>21> :C:D>'966E>@56=2DD6BF:G2=67E>21>			
:7E		\$6E6CD766E,*766E D6=64E23=6			
\$62DFC:78C2786		E@ >E@ 7E:9:E6D:56 C67=64E:G6			
D=@A65:DE2746		E@ >E@ 7EC2JD:56 C67=64E:G6			
	1)7=64E@C=6DD	I)*'E@>E@ 7E			
	FD:78"*52<C2J2C5	:756C2G6C2864@75:E:@?D H'E@ >E@ 7E H&)'E@>E@ 7E			
	.E9C67=64E:G6D966EE2C86E	:756C2G6C2864@75:E:@?D E@ >E@ 7E :756C8@>@54@>5E:@?D >E@ 7E			
	.E9>?:AC:D>D	:756C2G6C2864@75:E:@?D E@ >E@ 7E :756C8@>@54@>5E:@?D >E@ 7E			
	.E9'AC:D>	:756C2G6C2864@75:E:@?D E@ >E@ 7E			
	.E9'AC:D>D	:756C2G6C2864@75:E:@?D E@ >E@ 7E			
:DA=2JC6D@=FE:@?D	:76>@56	> 7E > 7E			
	1)2A:5D:78=6+C24<:78	1)2A:5D:78=6 > 7E+C24<:78 > 7E			
44FC24J1*&	1)7=64E@C=6DD	E@ >E@ 7EAA>1>>			
>62DFC:78	:76>@56	&G6C E@ >@G6C E@ 7E AA>1>>			
5:DE2746 F?E>>		&G6C E@ >@G6C E@ E@ 7E AA>1>>			
	1)7=64E@C=6DD	E@ >E@ 7EAA>1>>			
	1)2A:5>@56	&G6C E@ >@G6C E@ 7E AA>1>>			
		&G6C E@ >@G6C E@ E@ 7E AA>1>>			
	.E9C67=64E:G6D966EE2C86E	:76AA>1>> 1)2A:5AA>1>>			
	.E9AC:D>:76>@56	AA>1>>			
	.E9*AC64:D>?AC:D>DJDE6>	AA>1>> ?2			
	.E9AC:D>1)2A:5>@56	AA>1>>			
\$62DFC:78E:>6	:76>@561)2A:5+C24<:78	D:7:E:2=D D:7:E:2=D D:7:E:2=D			
\$62DFC:78>@56		:76D:78=6 C6A62E 2G6C286 1)2A:5D:78=6 C6A62E +C24<:78			
E>@DA96C:44@CC64E:@? 'C:D>4@?DE27E4@CC64E:@?		+>A6C2EFC6 'C6DDFC6 F>:5:EJ AA>:7AFE2G2:=23=6 E@>>>>DE6AD 7:165:7C67=64E@C=6DD>@56			
1)7C24E:@762CE94FCG2EFC64@CC64E:@?		06D' % @ D6=64E23=6			
&* 52E2DE@C286275EC27D76C					
&A6C2E:78DJDE6>AA=:42E:@?		\$4C@D@7E:~75@HD1)2E2@==64E:@?'@7EH2C6			
2E2DE@C286	1)7E6C72=>6>@CJ	\$5@C6E927\$2G2:=23=67@C5E2			
	\$6>@CJ42C55C:G6	'FAA@CEFAE@+JA6!!:@?J '42C5>21H:E9EJA6252AE6C '7=2D9>6>@CJFAE@+7@C>2E			
1)7E6C7246		DJ749C@?@FDD6C:2=1)*4@>A2E:3=6 2F5C2E6 E@ 3AD			
		*JA6275+JA6>?:			
=F6E@>@E9H:C6=6DD>@56>		=2DD -6C 1)A6C2E:78C2786FAE@> 7E			
*52E2E:C27D76C		'C@G:565			
676C2=					
:DA=2J		:?>C27DC67=64E:G6++(4@=@C#@?D:78=67246246H:E9324<=:89EC:89E>D6=64E23=6			
#6J3@2C5		15@ED24E:G6C62>>1>> E@F49D4C667 754@7EC@=A276=@7246:D2724E@CJ@AE:@?			
*2D6C@AE:@?E6C7F74E:@?		=A927F>6C:4 <6JDH:E9324<=:89E			
F:56#89E		&%'E@&77?:>?7E6D& D6=64E23=65@6D?@EH@C<D>:F=E276@FD=:JH:E9E96F:56#89E			
*67D:E:G:EJ@7=6G6=D	'=2E6=6G6=	+H@4@=@C#D D:78=62A6CEFC6 =2DD#AC@5F4E&A6C2E:78C2786E@>E@ 7E			
	:C4F=2CC2A9:4	>> >>			
&AE:42A=F>>6E	\$287:7:42E:@?	:C4F=2C=6G6= L>>C2A9:4#=6G6= L >8@? >:=@FE6C4:C4=6			
+C3C249		I I			
FDE275H2E6CAC@E64E:@7&A6C2E:78E6>A6C2EFC6		6E24923=6			
1)7DECF>67E96:89E*K6H:E99275=627532EE6CJ		!! E@ M E@M			
.689EH:E99275=627532EE6CJ		>>:77C@>EC:3C2493@EE@>.11>>.11:?			
'@H6CDFAA=J		AAC@I<8=3 :E9@AE:@72=4@?EC@=A276=2AAC@I<8=3			
2EE6CJ	DE2752C5	E@			
	@AE:@72=	#:@?C6492C8623=632EE6CJ9 A4D:74=F565DE2752C5			
	IE6C72=32EE6C:6D@AE:@72=	#:@?C6492C8623=632EE6CJ9 D6H:E9E96'252AE6C:74=F5652DDE2752C52446DD@CJ			
&A6C2E:78E:>62E MM		%: \$ C6492C8623=632EE6CJ 9 9			
D:78=6>62DFC6>67E		AAC@I9@FCD			
6G6CJ D64@75D	IE6C72=32EE6C:6D@AE:@72=	AAC@I9@FCD			
FE@>2E:4A@H6C4FE @77		2AAC@I9@FCD			
		>:7FE6D27E6C@A6C2E:@7&77 D6=64E23=6			

#2D6C=2DDJ4@77@C>DE@! >51)2CE 275
 :E9'@52<C2J2C5H9:E6D:56 C67=64E:G61)7=64E@C=6DDC2786244FC24>2JG2CJ244@C5:78E@>62DFC:78:634ED @3D6CG2E:@?D:EF2E:@7D27567G:C@>?>67E2=4@75:E:@?D
 967E96362>LD:74:56746278=6DH:E9:7 M:7C6=2E:@7E@E96C7=64E:G6D966EE2C86E
 G6C2864@75:E:@?D'=89E92K6 G.D.3:=EJ23@FE <>=:6D DF?7JAGC:@5D H62<D4:7E:=2E:@?
 @>54@75:E:@7D%@92K6 G.D.3:=EJ23@FE <>=:6D @G6C42DE ?@D4:7E:=2E:@?
 D2862AAC@G2=@7H:C6=6DDE649?=@>@GJ2C:6D244@C5:78E@4@F7ECJ=62D64@?DF=EJ@FC=@42="&"11@77:46@CC6AC6D67E2E:G6:725G2746

Product names mentioned in this brochure are trademarks of their respective owners.
 The Bluetooth® word mark and logos are registered trademarks of Bluetooth SIG, Inc.
 Designs and specifications are subject to change without notice.
 Product colors in this brochure may vary slightly from those of the actual products owing to limitations of the printing process.

SOKKIA SINGAPORE POSITIONING SALES PTE LTD
 60 ALEXANDRA TERRACE, #08-27 THE COMTECH SINGAPORE 118502
 PHONE : +65 6479 3966 FAX : +65 6479 4966 WEBSITE : www.sokkia.com.sg
 COMPANY REG. NO. : 201007531Z

